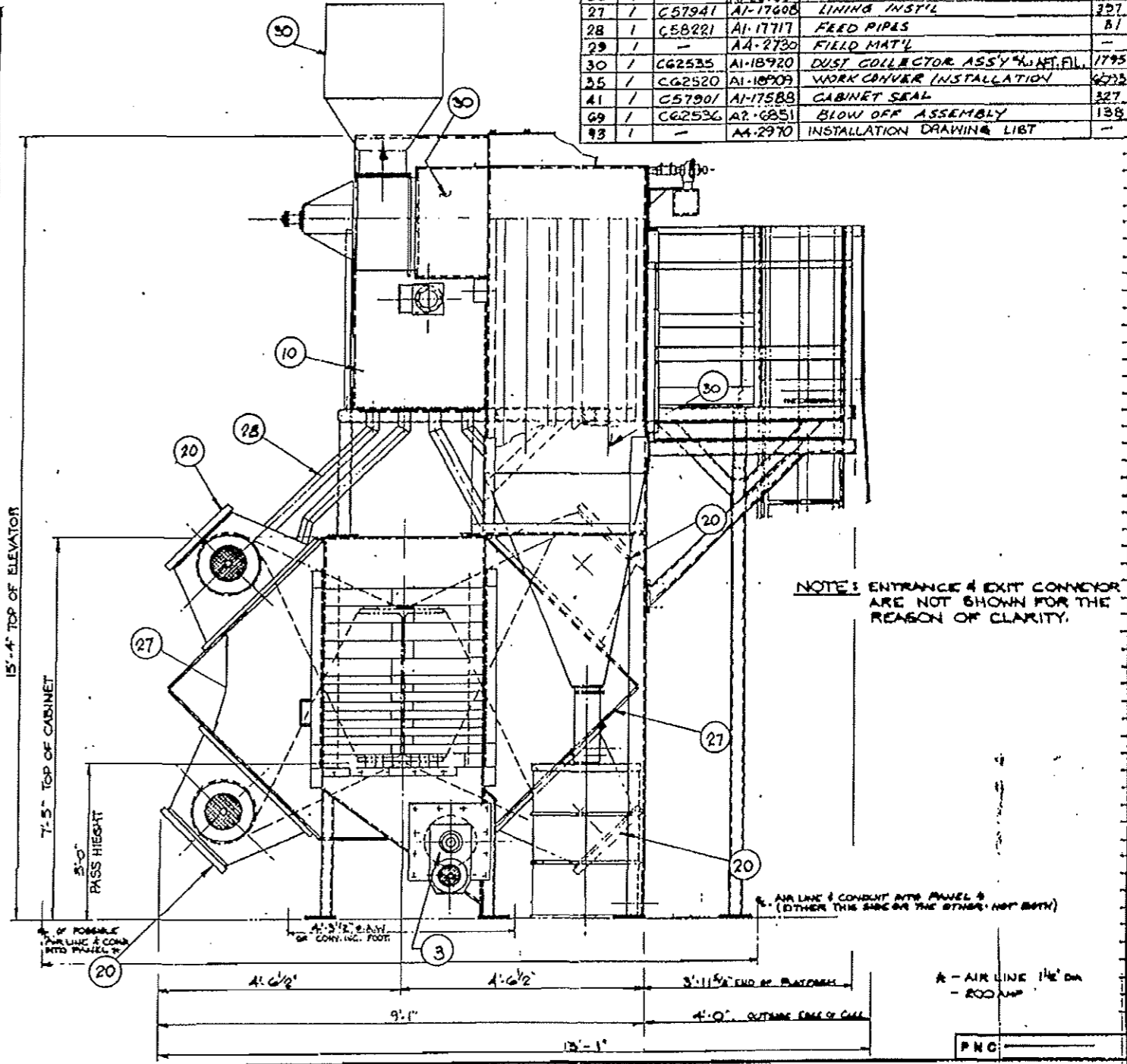
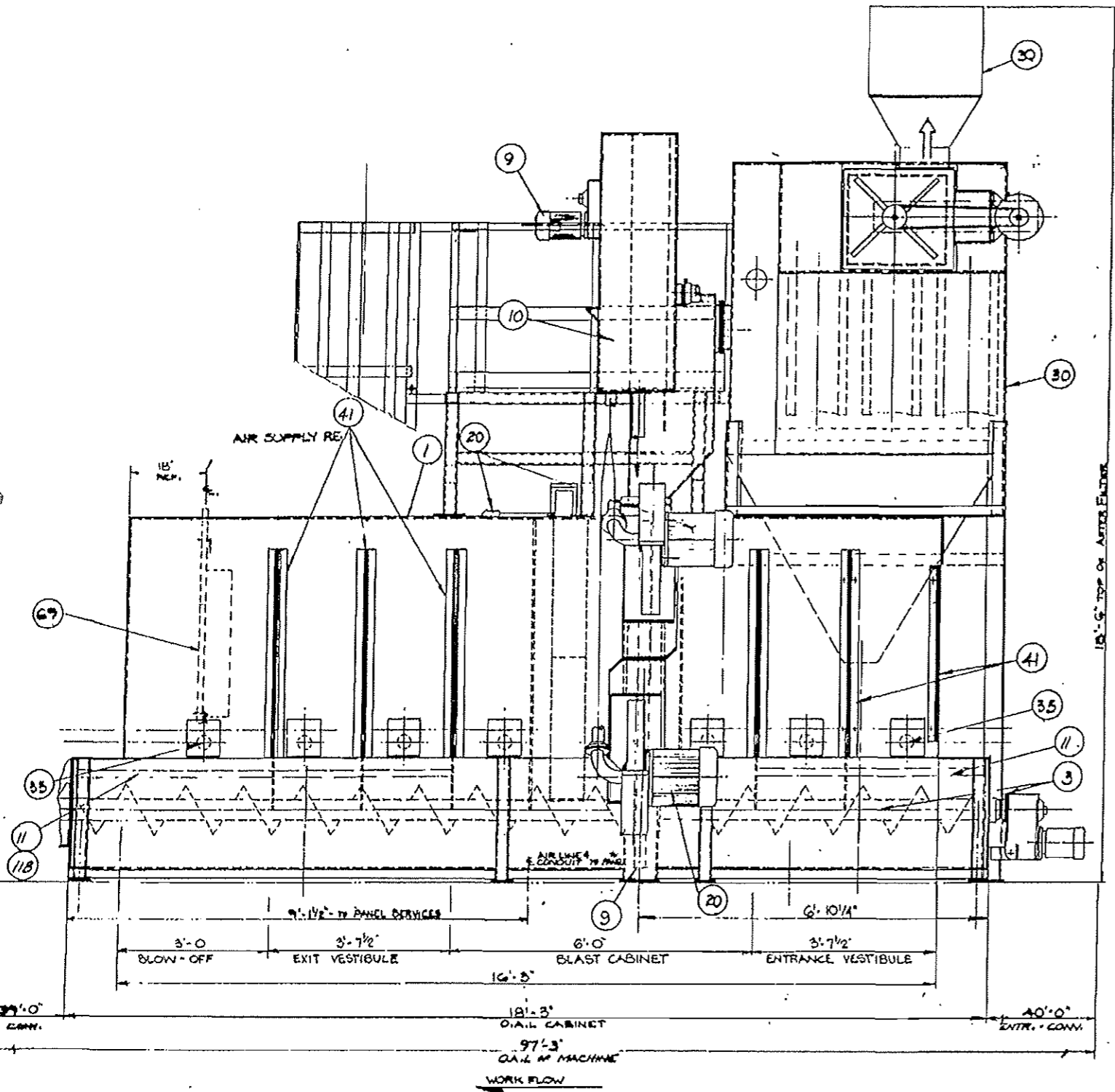


ITEM	QTY.	PART NO.	DWG. NO.	DESCRIPTION	WT.
1	1	CG2532	AI-18910	CABINET ARR'GMT	181
3	1	CG3040	AI-24542	SCREW CONVEYOR ARR'GMT	1051
9	1	CG2522	AI-18910	ELEVATOR ASS'Y	607
10	1	CG2524	AI-18912	SEPARATOR ASS'Y	376
11	1	CG2527	A2-6848	WEAR CHANNEL ARR'GMT.	327
15	1	AA-2969	AA-2969	ELECTRICAL EQUIPMENT	—
19	1	CG2522	AI-17716	DUCTING	—
20	4	CG2019	AI-22201	BLAST WHEEL & DRIVES	1532
24	1	CG3039	AI-24541	PLATFORM, S/W RAILS, LADDER & CAGE	1901
25	1	—	AI-25160	PNEUMATIC SCHEMATIC	—
27	7	CG2941	AI-17408	LINING INST'L	327
28	1	CG2221	AI-17717	FEED PIPES	51
29	1	—	AA-2730	FIELD MAT'L	—
30	1	CG2535	AI-18920	DUST COLLECTOR ASS'Y W/ NET, FILL	1795
35	1	CG2520	AI-18909	WORK CONVEYOR INSTALLATION	6232
41	1	CG2901	AI-17588	CABINET SEAL	327
69	1	CG2536	A2-6851	BLOW OFF ASSEMBLY	138
93	1	—	AA-2970	INSTALLATION DRAWING LIST	—



NOTE: ENTRANCE & EXIT CONVEYOR ARE NOT SHOWN FOR THE REASON OF CLARITY.

* AIR LINE & CONDUIT INTO PANEL 2 (OTHER THIS SIDE OR THE OTHER, NOT BOTH)

A - AIR LINE 1 1/2\"/>

BCP BLAST CLEANING PRODUCTS LTD.
Oakville, Ontario, Canada
(416) 827-0443

DATE	MAR. 31/93	DRAWN BY	J. HORTON	DEPT. OF	
GROUP	22	SCALE	3/4\"/>		
DESCRIPTION	4 WHEEL STRUCTURAL STEEL BLAST MACHINE		DWG. NO.	AI-18922	WEIGHT
REV.	DATE	DESCRIPTION	BY		22,386 lbs